

高美館展示空間配置

Floor Plans and Facilities

本館各展覽室除控制恆溫恆濕外，為滿足美術館機能與管理效率，在空間規劃上，依不同功能設計空間單元，一至四樓的展覽區包括前廳、雕塑大廳、各樓層展覽室及多目的室。地下樓的公共活動空間，則有南台灣唯一專門收藏藝術藏書與資料的藝術研究室，屬於「參考室」性質，不提供外借服務，目前資料、期刊、書籍總計約35,921份（冊），可供各界自由閱覽與研究。另外還包括可容納368個席位的大型演講廳，提供團體美術教學的美術資源教室，以及B01展覽室。

館內工作人員辦公之行政區及典藏藝術作品的典藏區等空間，則以出入口各自獨立，分區門禁管理並分時使用為原則。全館動線基本上配合不同層次之美術活動空間而規劃，並考慮參觀者與工作人員之不同動線，將參觀動線與管理動線區分清楚，易於管理。空間規劃原則如下：

前廳(北大廳)

為進入展覽空間的過渡空間，並可單獨開放使用，所有服務設施包含文物展售部、教育諮詢服務台、寄物台與電腦導覽系統等均設於此，機能獨立且明確。

雕塑大廳

是美術館的核心空間，也是所有展覽參觀活動的起點和回歸點，扮演串聯所有展示空間的角色。挑高四層的大廳，利用大片天窗引進自然光影，賦予了展示雕塑更強的生命力。

Space in the museum building is designed according to the function and efficient management of the specific areas, and in each gallery a same environmental condition is maintained. The four-story exhibition area includes a lobby, a sculpture hall, galleries, and a multi-purpose room. The public accessible facilities on the basement level include an art research room holding approximately 35,921 copies of books, periodicals, and materials, a 368-seat auditorium, and an art resource center providing schools/groups with art education. In addition, there is also Gallery B01.

There is also an administrative area and a storage area. To facilitate management of the various areas and use at different times, the gallery area and administrative area have their own independent entrances/exits. Exhibition and public spaces are clearly marked for ease and control of visitor traffic and flow. The idea behind the planning of the museum building and space is as follows:

Lobby

The lobby serves as a control area to prevent crowding in the galleries as well as an independent open area that includes all the main public services of the museum, such as the gift shop, information desk, bag check, and computer information system.

Sculpture Hall

The sculpture hall is the nucleus of the museum space and also the area that all visitors must pass through to go to any other gallery. For this reason, it serves as the central link and core of the museum space. The hall ceiling reaches four stories in height and is fitted with skylights that allow sunlight in and give the space and sculptures there a sense of natural life.

一樓101~103展覽室

位於雕塑大廳右側，空間為314公分高，有獨立門禁與單一動線之管理，在展品安全考量前提下，適合規劃國際特展型之展示。

一樓104~105展覽室

位於雕塑大廳左側與正前方平台及後方，為雙層高度空間，設計上安排了不同方式的挑空和夾層展示空間，提供參觀者一個多角度觀察的可能性。以展示雕塑品或大型裝置為主，可配合各種不同主題、不同創作方式作多變化的展示。

Galleries 101-103 (1st Floor)

Located to the right of the sculpture hall, these galleries are 314 cm high. Since the space is independent, it is suitable for special international exhibitions that require strict control of access and visitor traffic to ensure safety.

Galleries 104-105 (1st Floor)

Located behind and to the left of the sculpture hall, the ceilings of these two galleries are two stories high and are designed to accommodate works of unconventional size or format. Balconies and stairways provide visitors with an alternative view of the works on display. Although mainly devoted to sculptures, the galleries are suitable for other media as well.



101展覽室



104展覽室



104 展覽室

二樓201~203展覽室

201~203展覽室中，202與203室為雙層高度空間，均包含挑高展覽室的设计，是本樓層的獨特空間特性，以展出大尺幅作品為主，配合隔離紫外線的優雅頂光，充分展現展覽品之氣勢。

Galleries 201-203 (2nd Floor)

The ceilings of Galleries 202 and 203 on the second floor are two stories high and are designed to display large-size works. The UV-filtered skylights allow sunlight in and give the works sense of magnificence.



202展覽室



202展覽室

三樓301～304展覽室

展覽室分303、304兩大室與301、302兩小室，可配合各類專題陳列室之旨向需求，適合尺寸適中之平面作品或需暗室影像放映之展覽。

Galleries 301-303 (3rd Floor)

The galleries on the third floor are divided into two large rooms (303 and 304) and two smaller ones (301 and 302). These galleries are designed for thematic exhibitions and can accommodate moderate-size works or exhibitions which require dark rooms for projection or screening.



303展覽室



303展覽室

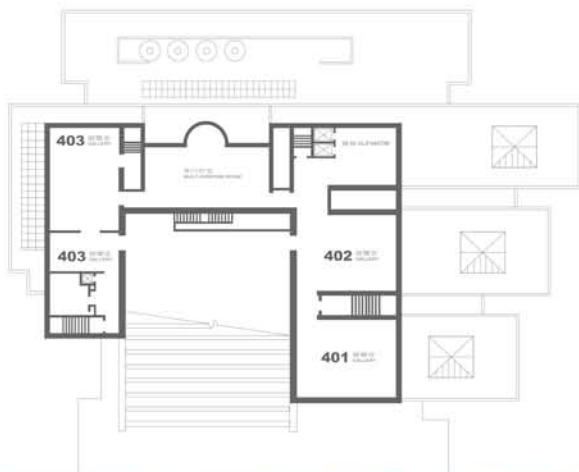


四樓401~403展覽室暨多目的室

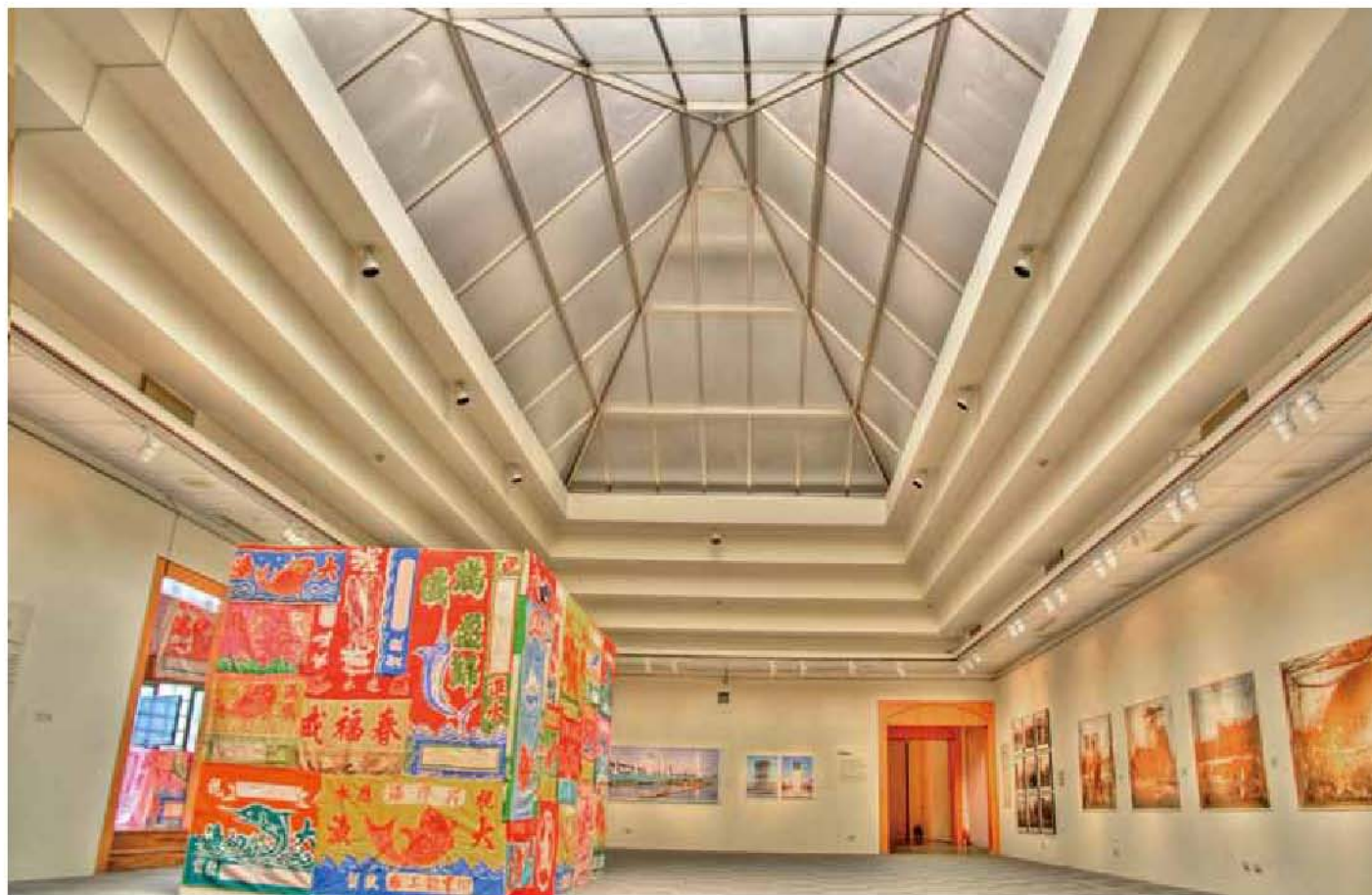
401、402、403展覽室，均為可機動調節之展覽室，可隨展示規模之不同，作不同的空間變化。多目的室中央亦設有優雅的頂光，適合展現大型雕塑或裝置作品的氣勢。目前「創作論壇」及「高雄獎」之展覽多安排於此展出。

Galleries 401-403 and Multi-purpose Room (4th Floor)

The galleries on the fourth floor can be divided and partitioned according to display need and function to create different arrangements of space and size. There are also skylights on the ceiling of the Multi-purpose Room, which is suitable for the display of large-size sculptures or installation works. Now these galleries are mostly dedicated to exhibitions of the *Forum for Creativity in Art* and *Kaohsiung Awards*.



402展覽室



多目的室



地下樓B01展覽室

目前主要為「市民畫廊」展出空間，鄰近本館演講廳與藝術研究室，可隨展示需求區隔不同之空間設計規劃。

Gallery B01 (Basement Level)

Near the auditorium and art research room, Gallery B01 now mainly serves as the *Gallery for Citizens*. It can also be divided and partitioned according to display need and function to create different arrangements of space and size.



B01展覽室

高雄市立美術館各展覽室內部空間坪數表

	101展覽室	102展覽室	103展覽室	101~103走道	104展覽室	105展覽室	小計
1樓(坪數)	117	107	116	49	123	117	629
樓高約	314公分	314公分	314公分	314公分	801公分	801公分	

	201展覽室	202展覽室	203展覽室	小計
2樓(坪數)	107	134	140	381
樓高約	314~821公分	314~821公分	314~821公分	

	301展覽室	302展覽室	303展覽室	304展覽室	301~302走道	面雕塑大廳走道	304展室前	小計
3樓(坪數)	68	58	129	126.31	72.25	道	13.72	514.64
樓高約	328公分	328公分	328公分	328公分	328公分	47.36	328公分	

	401展覽室	402展覽室	雙電梯前	多目的室	403展覽室	401~403空橋	小計
4樓(坪數)	70	70.7	37.5	72.63	90.14	橋	380
樓高約	343公分	343公分	320公分	336公分	336公分	39.03	

總計(坪數) 1,904.64